



Cycling Bearing Tool

Operation Manual

SRC-TT-B006D.

PATENT

Taiwan Utility Model Patent No. M407311 / M457655

Japan Utility Model Patent No. 3174226 / 3183510

PROC Utility Model Patent No. ZL201120553594.0/ ZL201320080197.5

Australian Utility Model Patent No.2013100311

SRC-TT-B006D. Operation Manual



Product Feature












- It can replace External BB Bearings / Press Fit Bearings and cups on bike frame directly and easily.
- It is recommended for Cycling Shop or Repair Center using.

Function

compatible to the following Bottom Bracket Systems

- BSA BB bearing replacement for Shimano/SRAM/all system
- Press Fit BB Bearings replacement for all system
- Interlock BB bearing replacement for CEMA
- BB30 bearing replacement for FSA/ Spaceline BB30/BBright BB30
- Press Fit/ Interlock BB Cup remove for all system
- External BB Cup protection for Shimano/FSA/SRAM external thread
- **NEW** for SRAM Dub & PRAXIS M30

Parts List

Item	Picture	Parts List	CEMA No.
1		Extractor Tube	SRC-TT-B006D-03
2		Adapter 22mm x 24 mm 22mm x 30 mm 25mm x 30 mm	SRC-TT-B006D-04 SRC-TT-B006D-05 SRC-TT-B006D-06
3		Bearing Removal Ring 24mm	SRC-TT-B006D-08
4		Bearing Removal Ring 30mm	SRC-TT-B006D-09
5		Bearing Removal Ring For SRAM	SRC-TT-B006D-10
6		Spacer – For BB86	SRC-TT-B006D-11
7		Spacer – For PF30/386	SRC-TT-B006D-12
8		Gasket- for CEMA BB cup	SRC-TT-B006D-07
9		Thread Screw	SRC-TT-B006-14
10		Hex Wrench	SRC-TT-B006-15
11		BB Adapter for BSA	SRC-TT-B006D-16
12		BB Adapter for PF30	SRC-TT-B006D-18
13		Gasket- for CEMA BSA386 / ITA386 Bearing remove	SRC-TT-B006D-13
14			SRC-TT-B006D-19

Operation :

- Shimano External BB and Press Fit Bearing Replacement

Step 1. Remove dust cap.



Step 2. Place bearing removal ring (OD24mm,PN: SRC-TT-B006D-08) on extractor tube, then put through the frame.



Step 3. Insert thread screw and fit bearing cup. Tighten screw to remove bearing.



Step 4. CEMA Bearing Kit. Place CEMA bearing (SRC-BB-S003 / SRC-BB-S005) onto adapter and fit bearing cup (OD25mm).



Step 5. Tighten screw to fit bearing and then replace caps.



● Shimano PF BB(86/92) Bearing Replacement

Step 1. Remove dust cap.



Step 2. Place bearing removal ring (OD24mm, PN: SRC-TT-B006D-08) on extractor tube, then put through the frame.



Step 3. Fit bearing cup, tighten screw to remove bearing, remove another one with the same way.



Step 4. CEMA Bearing Kit. Place CEMA bearing (SRC-BB-S003 / SRC-BB-S005) onto adapter and fit bearing cup (OD25mm).



Step 5. Tighten screw to fit bearing and then replace caps.



● **Shimano PF BB Set Replacement**

Step 1. Place BB set onto adapter(OD24mm), and external bearing cup(OD24mm).



Step 2. Place both side tightly to the frame, and tighten the screw to install the bearing set into the frame.



Step 3. Place the removal ring (24mm, PN:SRC-TT-B006D-08) onto the extractor tube and insert into BB.



Step 4. Insert screw add spacer (PF86 / 92) and thread on bearing cup into the tube then tighten the external bearing cup.



Step 5. Tighten to remove BB cup, repeat process for the other cup.



● **SRAM External BB Bearing Replacement**

Step 1. Remove dust cap. Insert the extractor tube through the Non Drive side bearing, lock the external cup, and tighten the screw to remove the bearing.



Step 2. Place the removal ring(24mm PN: SRC-TT-B006D-08) then insert the extractor tube through the Drive side bearing, lock the external cup, and tighten the screw to remove the bearing.



Step 3. CEMA Bearing Kit. Place the spacer first, CEMA bearing (SRC-BB-S004 / SRC-BB-S006) onto the adapter (22mm) and fit bearing cup.



Step 4. Tighten screw to fit bearing and then replace caps.



● **SRAM PF BB Bearing Replacement**

Step 1. Remove dust cap. Insert the extractor tube through the Non Drive side bearing, lock the external cup, and tighten the screw to remove the bearing.



Step 2. Place the removal ring(24mm, PN: SRC-TT-B006C-08) then insert the extractor tube through the Drive side bearing, lock the external cup, and tighten the screw to remove the bearing.



Step 3. CEMA Bearing Kit. Place the spacer first, CEMA bearing (SRC-BB-S004 / SRC-BB-S006) onto the adapter (22mm) and fit bearing cup.



Step 4. Tighten screw to fit bearing and then replace caps.



● **SRAM PF BB Set Replacement**

Step 1. Place BB set onto adapter(OD22mm), and external bearing cup(OD24mm).



Step 2. Place both side tightly to the frame, and tighten the screw to install the bearing set into the frame.



Step 3. Remove the bearings from the frame, and insert the extractor with the removal ring(30mm) into frame.



Step 4. Insert screw add spacer (PF86 / 92) and thread on bearing cup into the tube then tighten the external bearing cup to remove the BB set.



Step 5. Insert screw BB spacer and add spacer (PF86 / 92) then thread on bearing cup into the tube, tighten the external bearing cup to remove the BB set.



● **BB30/PF30/PF386 Bearing Replacement**

Step 1. Remove dust cap. Insert the extractor tube with the removal ring (30mm, PN: SRC-TT-B006D-09) through the frame to the bearing, insert the screw through the tube to fit the cup.



Step 2. Tighten the screw to remove the bearing, repeat process for the other one.



Step 3. CEMA Bearing Kit. Place CEMA bearing (SRC-BB-BC30 / SRC-BB-BS30) onto the adapter (30mm) and fit the frame, place the adapter on another side to place correctly.



Step 4. Tighten cup and screw to fit bearing and then replace caps. Repeat the process for the other one.



※ Repeat process for PF30 / PF386 bearings.

● **PF30/PF386 BB Set Replacement**

Step 1. Place BB set onto adapter(30mm).



Step 2. Place both side tightly to the frame, fit the external bearing cup and tighten the screw to install the bearing set into the frame.



Step 3. Place the removal ring (30mm) onto the extractor tube and insert into BB.



Step 4. Insert screw add spacer (PF30 / 386) and thread on bearing cup into the tube then tighten the external bearing cup.



Step 5. Tighten to remove BB cup, repeat process for the other cup.



● **PF30 Adapter Set Replacement**

Step 1. Place BB set onto adapter (24mm), and external bearing cup(OD24mm).



Step 2. Place both side tightly to the frame, and tighten the screw to install the bearing set into the frame.



Step 3. Insert the extractor tube with the removal ring (30mm, PN: SRC-TT-B006D-09) through the frame to the bearing.



Step 4. Insert screw add spacer (PF30 / 386) and thread on bearing cup.



Step 5. Tighten the screw to remove the BB set. Repeat the same process for another one.



● **InterLock BB Installation**

Step 1. Press one side of the bottom bracket into the bracket shell, and then insert the other half into the bracket shell.



Step 2. Insert the bottom bracket adapter (SRC-TT-B014/B015) and tighten the thread screw.



Step 3. Tighten up the bottom bracket to the bottom bracket shell until there is no gap between the bracket and the shell.



● **InterLock BB Removal**

Step 1. Insert the bottom bracket adapter (TT-B014/B015), and then remove one side of the bottom bracket.

Adapter Tool →

PN: SRC-TT-B014, for BSA24mm Spindle

PN: SRC-TT-B015, for 30mm Spindle, BB386, BB38624, PF30



**Step 2. Insert the thread screw into the external bearing cup.
Place the spacer between the external bearing cup and bottom bracket.
Remove the bottom bracket.**

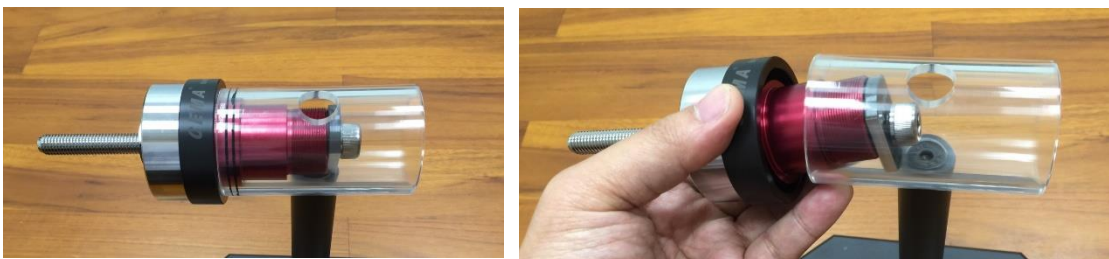


Spacer Choice →

PN: SRC-TT-B0016-11 for

BB86/ BSA external BB/BB30(A)24/ PF3024/ RBB3024/ RPF3024/ OSPF3024

PN: SRC-TT-B0016-12 for PF30/ BB386/ BB30386/ BB38624/ PF30386



● **InterLock Bearing Removal**

Step 1. Remove the dust cap. Insert the extractor tube through bottom bracket and install the correct size of the removal ring.

Bearing ID: 24~25mm→use 24mm removal ring, PN: SRC-TT-B006D-08

Bearing ID: 30mm→use 30mm removal ring, PN: SRC-TT-B006D-09



Step 2. Insert the thread screw through extractor tube then lock the external bearing cup.



Step 3. Tighten the screw and remove the bearing.

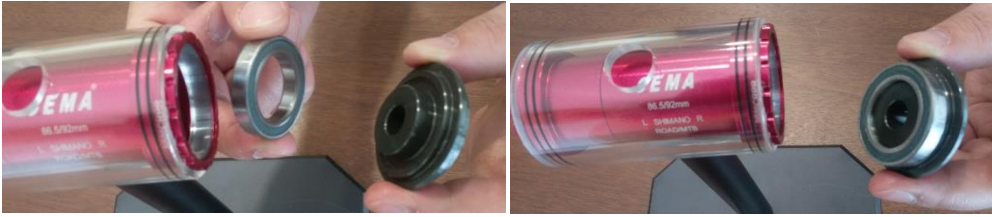


Step 4. Bearing removed.



● **InterLock Bearing Replacement**

Step 1. Place the new bearing onto the correct size of adapter.



Step 2. Insert the screw to the new bearing with the adapter then insert it through the bottom bracket. Install the bearing cup on the other side of the screw.



Step 3. Tighten up the screw to fit the bearing. Then remove the screw and the adapter.



Step 4. Replace the dust cap. New bearing replacement has completed.



● **InterLock Hand Adapter Removal**

Step 1. Select the Gasket (PN:SRC-TT-B006D-07). And insert the thread screw with Gasket through the frame to the hand adapter.



Step 2. Insert the thread screw into the spacer (BB86/PF30/386) and the external bearing cup. Then lock the external bearing cup.



Step 3. Press-fit the thread screw and roll hex wrench while making sure that the rim of the hand adapter stays parallel to the rim of the external bearing cup.



Step 4. Tighten the hex wrench and remove the hand adapter.



● **BSA386/ITA386 BEARING Replacement**

Step 1. Prepare SRC-TT-B006D-16/SRC-TT-B006D-13(Gasket)/SRC-TT-B006-14(Screw)



Step 2. Insert SRC-TT-B006D-13(gasket) with SRC-TT-B006-14(screw) through BB



Step 3. Use SRC-TT-B006D-16 and fasten SRC-TT-B006-14(screw) with Allen key



Step 4. Rotate with gasket and screw to remove the BB



- **SRC-TT-B006D-16/ SRC-TT-B006D-17 BB Metal cups**

Step 1. SRC-TT-B006D-16 3 in 1 cup for M10+Shimano BB+ FSA 30 BB

SRC-TT-B006D-17 3 in 1 cup for 3/4 square hole+ Shimano BB + FSA 30 BB



Step 2. Use wrench to press in from one side and screw in the other side slowly

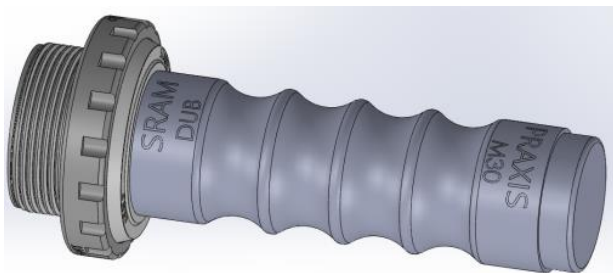
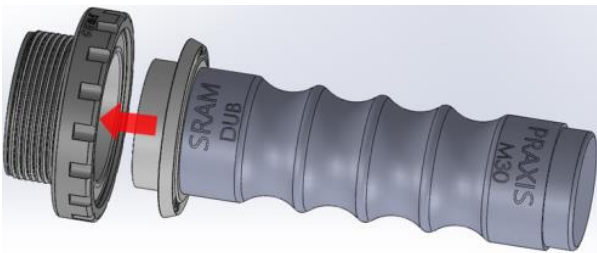
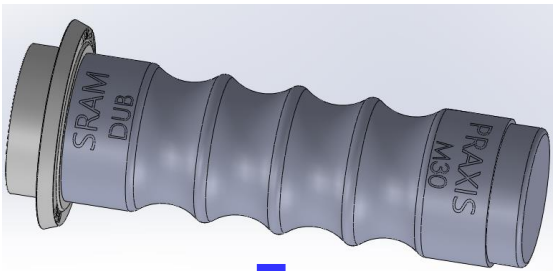
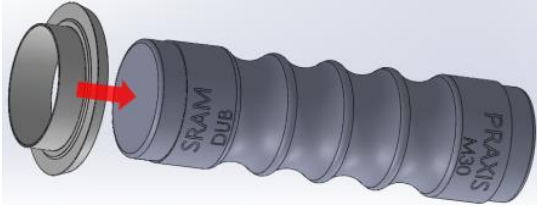


Step 3. Use cups to hold 2 sides and fasten up to 40~50NM

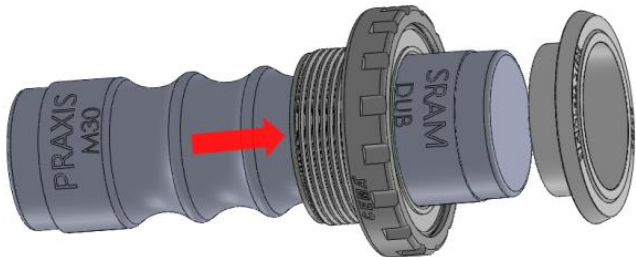
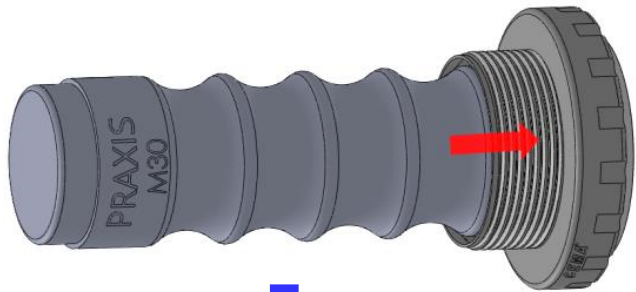
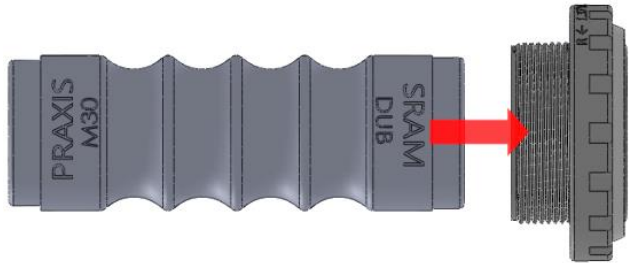


● **SRAM DUB Replacement Tool**

Installation:

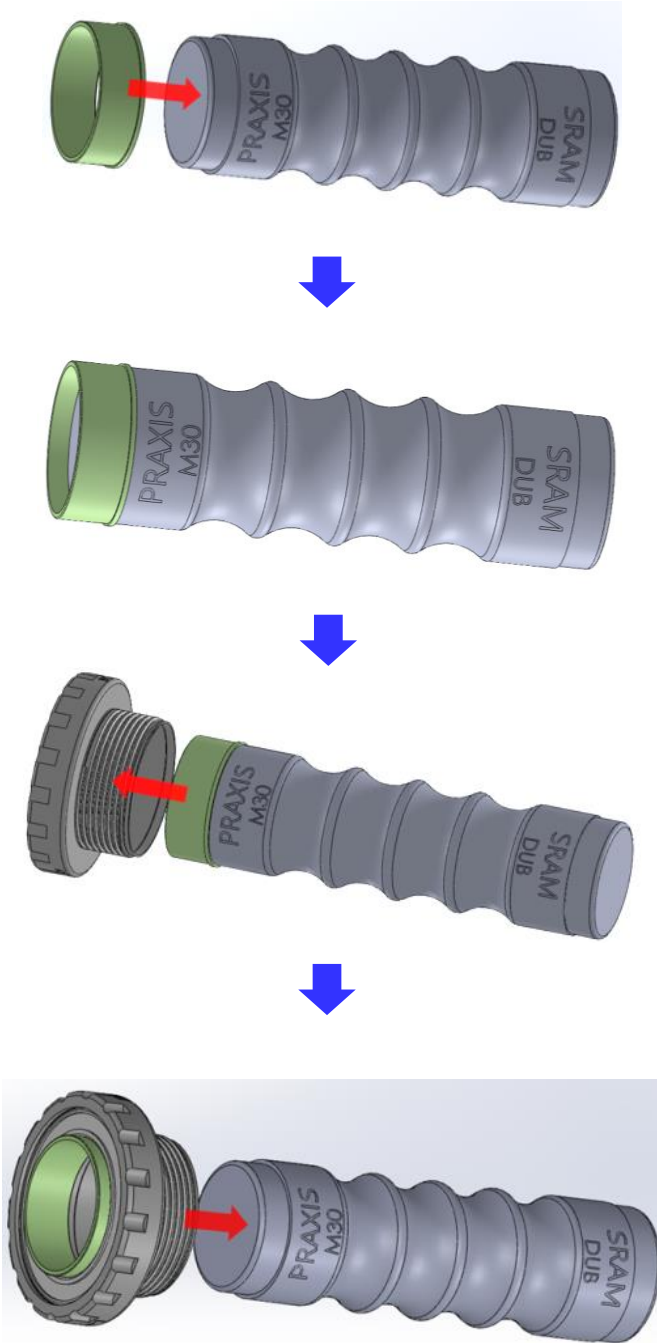


Removal:

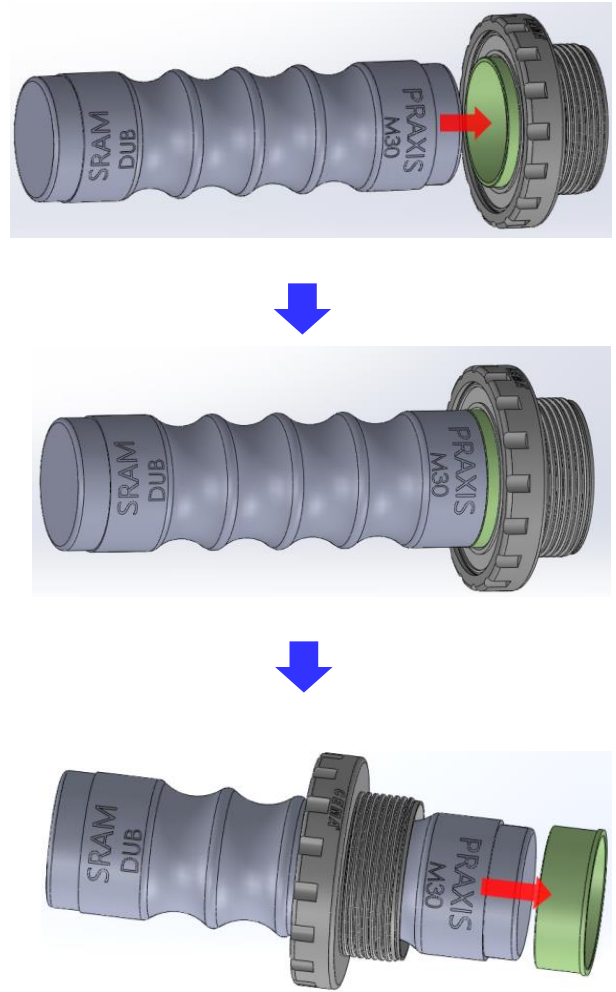


● **PRAXIS M30 Replacement Tool**

Installation:



Removal:



CEMA Bicycle Professional Tool



BOTTOM BRACKET REPLACEMENT TOOL B006D

Removal and Installation
of BB30/BB86/
BB386/PF30/BB90

BEARING PULLER B004A

Removal of wheel bearings



HUB BEARING PRESS B008A/B/C

Installation of wheel bearings



TAIWAN Head Office

6F-1, No.8, Taiyuan 1st St.,
Zhubei City, Hsinchu County, Taiwan
TEL: 886-3-5601270
FAX: 886-3-5601290
service@cemabearing.com

Edit 2024

We are not responsible for possible printing errors

www.cemabearing.com